

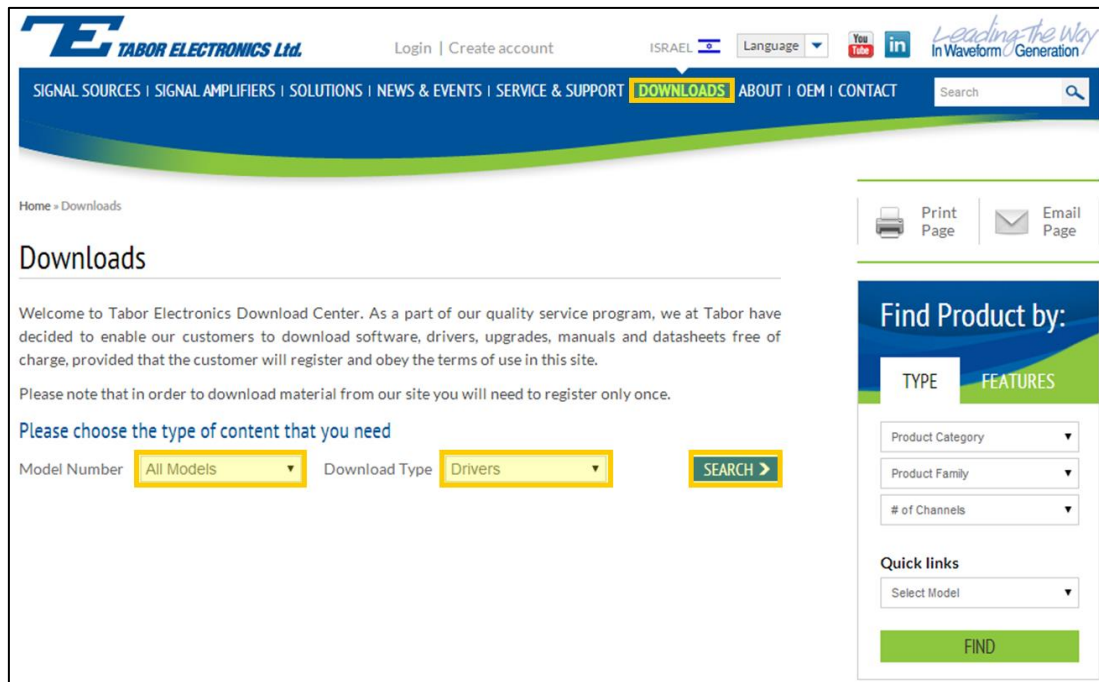
## How to Simply Connect WW, WS & PM Series via USB

This document contains instructions on how to simply **connect to Tabor Electronics devices** via their USB port. The following devices are covered in this document.

- ❖ Entire WW series (WW5061/2/4, WW1071/2/4, WW2571/2A, WW2571/2 WW2074, WW1281, WW1281A).
- ❖ PM8571/2 (none "A").
- ❖ WS8101/2, WS8251/2 (excluding WS835x models).

➔ **To connect the Tabor unit via the USB port:**

1. Install the USB device driver, which can be accessed either on the CD-ROM disk provided with your Tabor device, or from Tabor Electronics web site at <http://www.taborelec.com/>.
2. To download the driver from our web site, click on **Downloads**, and select the model from the **Model Number** drop-down box, and select "Drivers" from the **Download Type** drop-down box. Click on the **Search** button.



The screenshot shows the 'Downloads' page on the Tabor Electronics website. The page has a blue header with the company logo and navigation links. The main content area is titled 'Downloads' and includes a welcome message. Below the message, there is a section titled 'Please choose the type of content that you need' with two dropdown menus: 'Model Number' (set to 'All Models') and 'Download Type' (set to 'Drivers'). A green 'SEARCH' button is next to the dropdowns. On the right side, there is a 'Find Product by:' section with a 'TYPE' tab selected, showing dropdowns for 'Product Category', 'Product Family', and '# of Channels'. Below this is a 'Quick links' section with a 'Select Model' dropdown and a green 'FIND' button. There are also 'Print Page' and 'Email Page' links at the top right of the main content area.

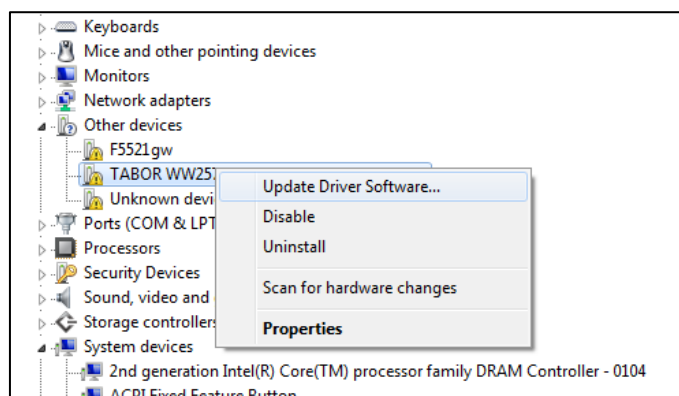
**Download & unzip** a suitable USB driver from the selection of drivers that appears:

- **For Win XP, 7 OS**
- **For Win 8, 10 OS**

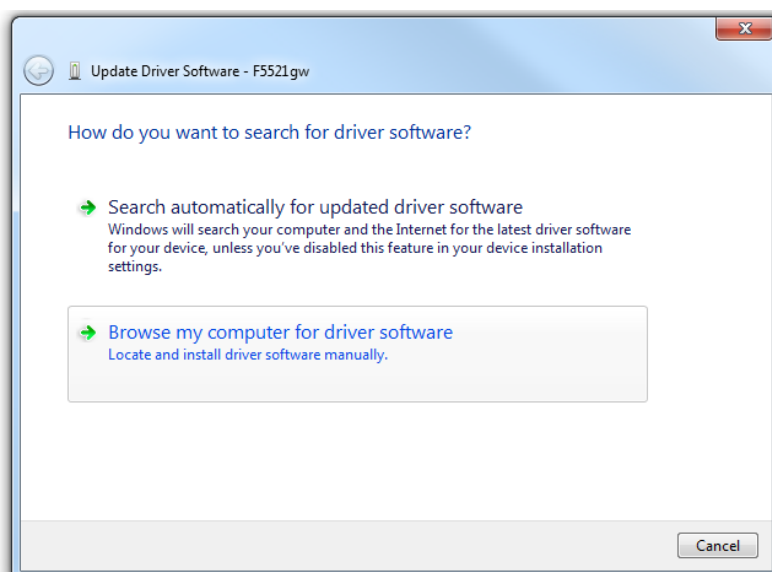
3. Connect your computer to the device using a USB cable. To activate the USB interface, access the **Select Interface** screen from the **Top Menu>>Utilities >> Remote Setup** menu, select the **USB** option, and press **ENTER**.



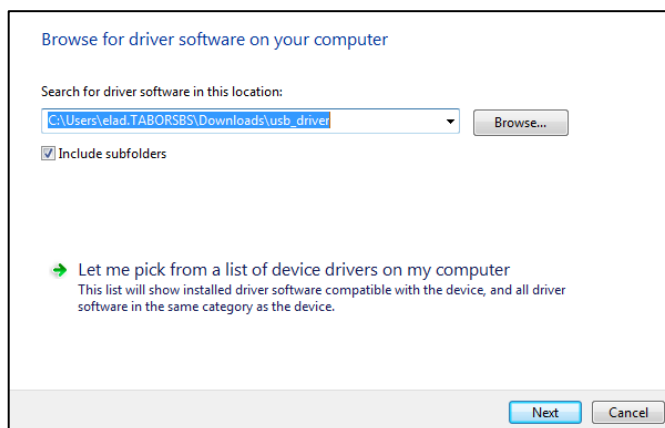
4. Installation of the USB driver:
  - a. Open the windows device manager and right click to update the driver software:



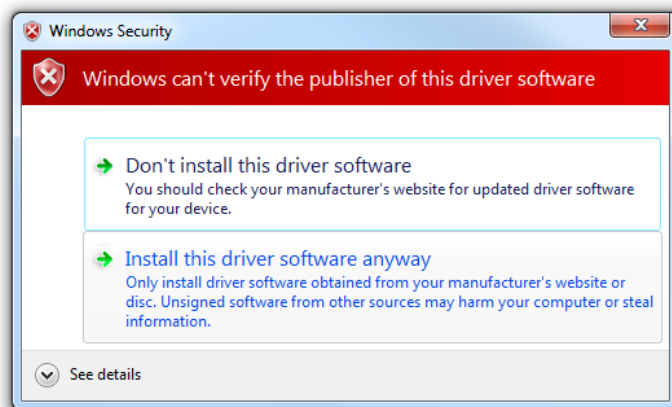
- b. Choose the “browse my computer for driver software” option:



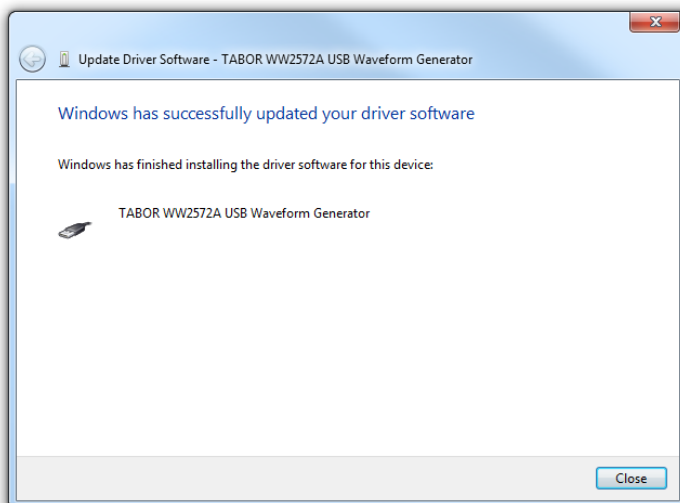
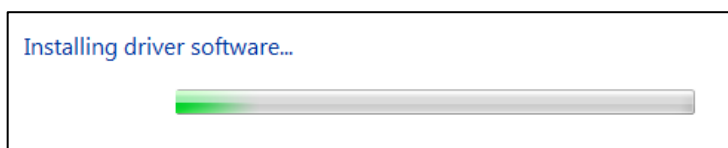
- c. Choose “Browse” to look for the folder you already downloaded, that contains the UNZIPPED version of the USB driver. Click “Next”:



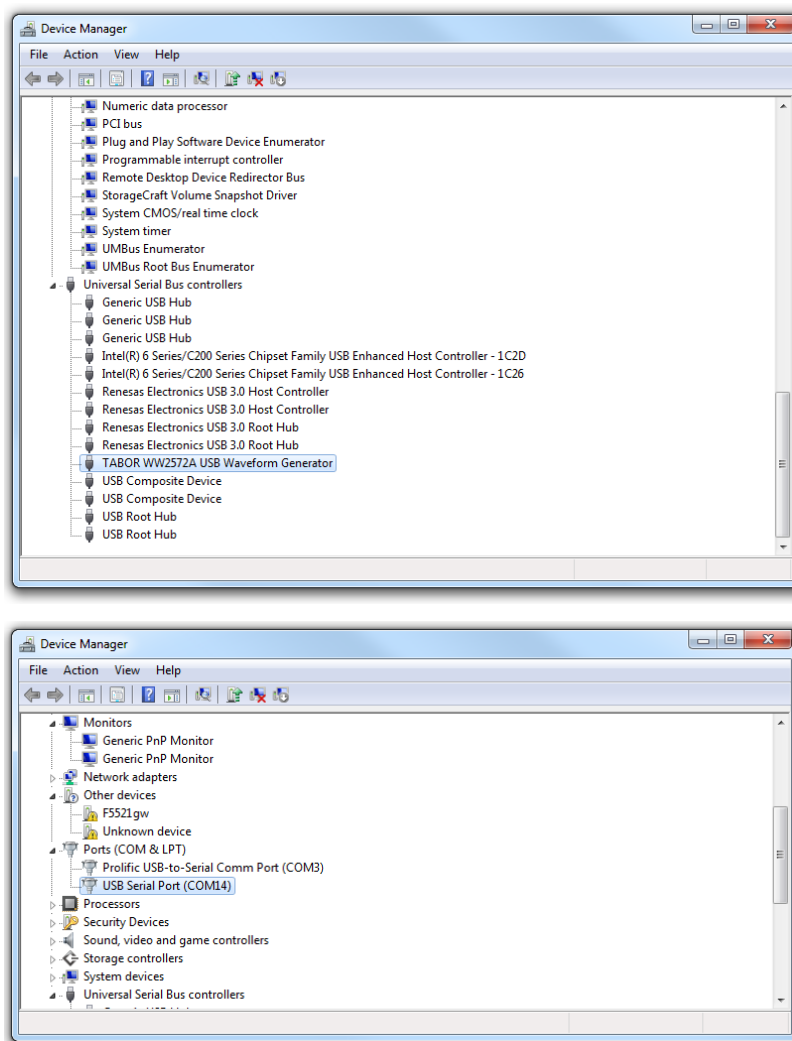
- d. Choose to Install this driver software anyway:



- e. Wait for the installation to complete:



5. To make sure the device's USB settings are correctly configured, open your Device Manager (**Control Panel >> Hardware and Sound >> Devices and Printers >> Device Manager**) and compare the settings to the settings displayed in the windows below. If the installation didn't configure the **USB serial port** as can be seen below, repeat the same procedure for it as well (update driver software...).



If you followed all these steps and still encounter difficulties with installation of the USB driver, please contact us at [support@taborelec.com](mailto:support@taborelec.com) and our support team will gladly help you to finish this process.

## For More Information

To learn more about Tabor's solutions or to schedule a demo, please contact your local Tabor representative or email your request to [info@tabor.co.il](mailto:info@tabor.co.il). More information & tutorials can be found at our website at [www.taborelec.com](http://www.taborelec.com)

© Proprietary of Tabor Electronics Ltd.